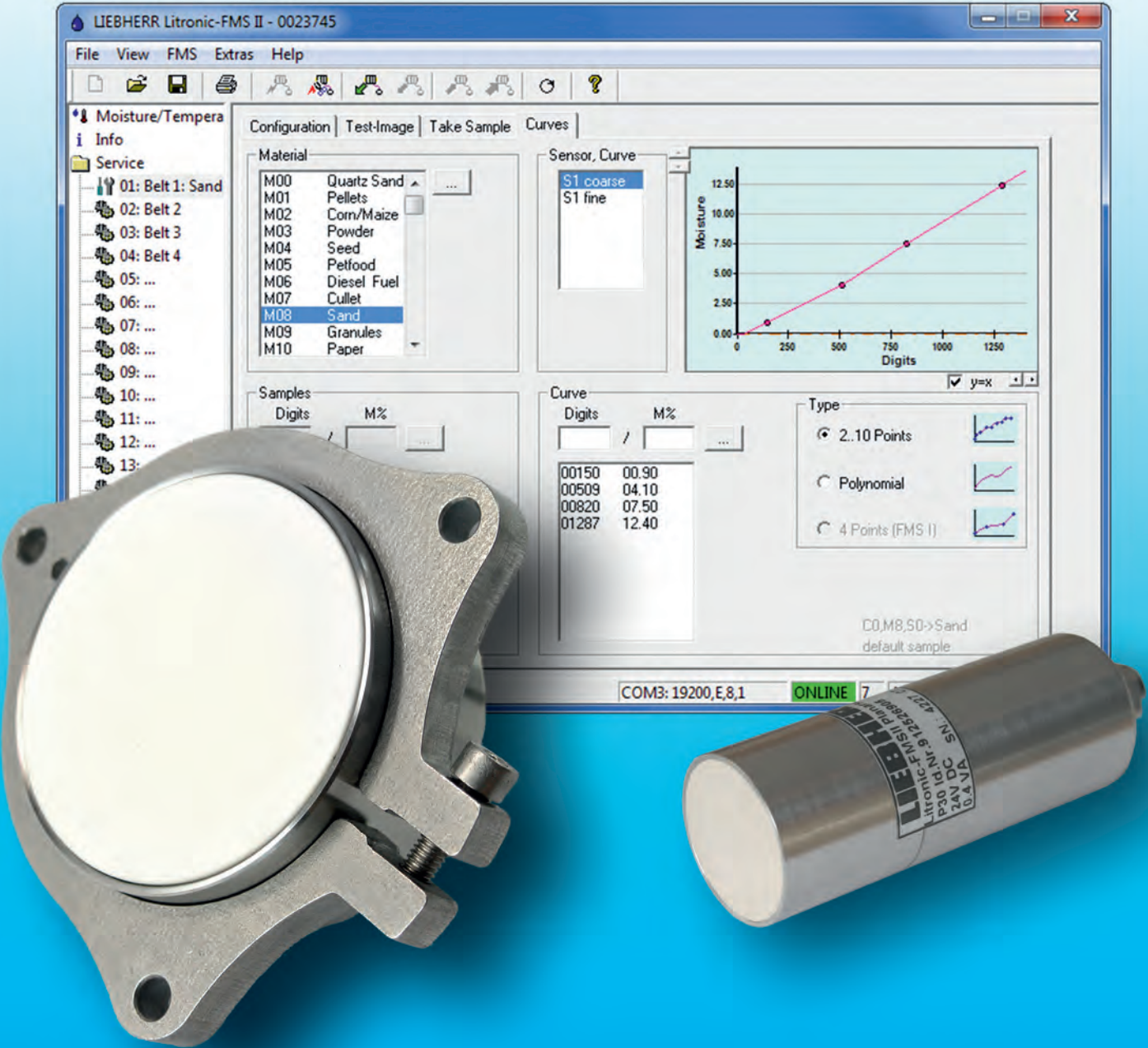


# Litronic-FMS

## Reliable Moisture Measuring System.



# LIEBHERR

# 60 years of worldwide experience



Liebherr-Mischtechnik GmbH is one of more than 130 companies of the international Liebherr group.

The product portfolio of measuring systems has been developed from the experience in mixing technology.

To guarantee a constant high quality and best results of produced concrete a reliable moisture measurement is most essential. This well-engineered and innovative system is used worldwide for a wide range of materials today.



Horizontal concrete mixing plant type Mobilmix



Moisture measurement of sand in a concrete mixing plant

## Sensor production

Since 1985 Liebherr develops, produces and distributes efficient moisture measurement systems for the industrial automation around the world.

At the Liebherr factory in Bad Schussenried the sensors are produced and calibrated in an ESD-protected production line.

Each sensor will be tested separately in a several hour process across the entire working temperature range before leaving the factory.

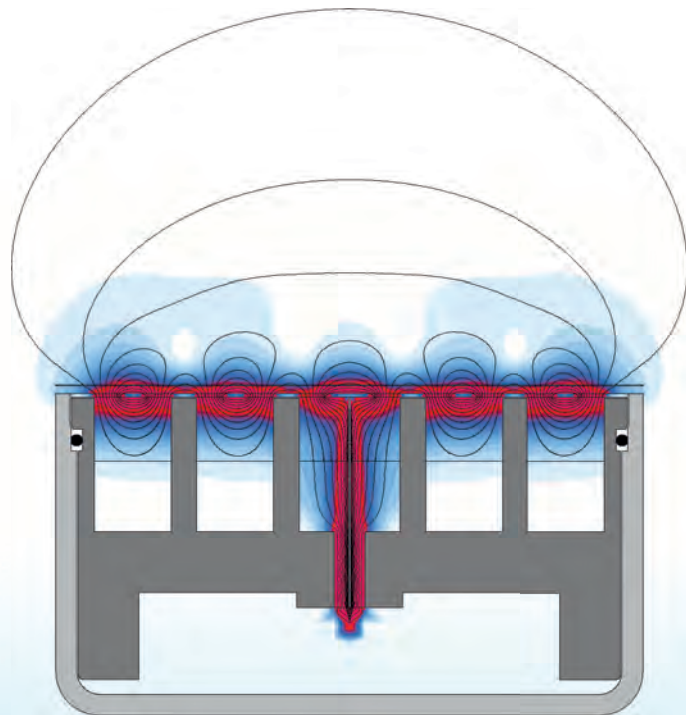


Sensor production line

## Development

Sensor development at Liebherr includes the total R&D value chain from the physical idea to the final solution, from the first concept to the finished product.

The competent electronic development and the experience from the field of construction machines under extreme conditions guarantee a very high reliability and a long life time of the sensors.



During the development phase FEM-simulations allow accurate statements about the future characteristics of the sensors

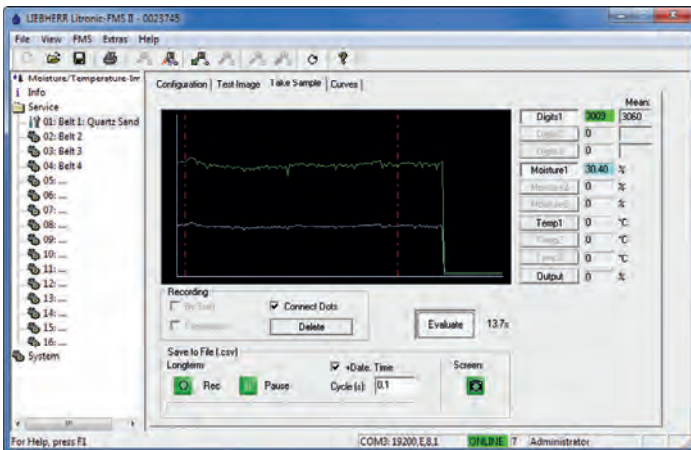
# System overview

An autonomous stand-alone-system with almost unlimited possibilities. Highest quality and best results during process are guaranteed by the exact material moisture measurement.

The Litronic-FMS will meet your requirements in any case. An easy-to-use PC software enables a fast and exact calibration.

## Features:

- Modular expandable construction
- Fully reproducible sensors
- Adjustable measuring range
- Material curves change over
- Material temperature compensation
- Suitable for high material flow
- Interference-free digital signal transmission
- Installation of electronic components on DIN mounting rail (TS-35)
- Suitable for batch and continuous processes



✓  
Parameterisation and  
visualisation  
by Litronic-FMS  
PC-software



✓  
Parameterisation  
and visualisation  
by Litronic-FMS  
indication and  
parameterisation  
module



■ = standard    ■ = option



Up to 16 sensors

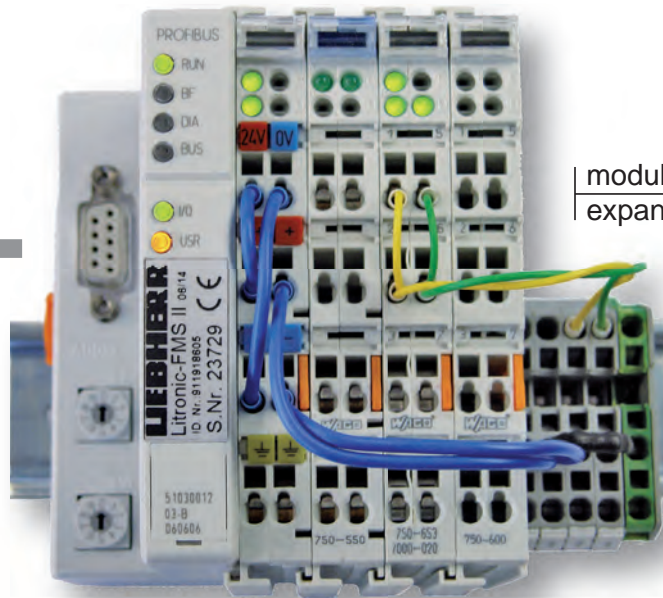
Sensor P30



Litronic-FMS  
interchange and evaluation unit

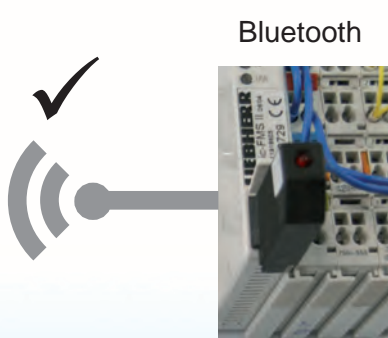
Sensor bus  
RS-485

✓  
PROFIBUS DP  
Measurement value transfer  
material curves change over



modular  
expandable →

RS-232



Bluetooth

✓  
Analogue output  
0-10 V 12 bit or  
0/4-20 mA 12 bit

✓  
Digital inputs for start/stop  
control and material curves  
change over

✓ RS-232 / Ethernet

Ethernet

Digital outputs for  
limit signal

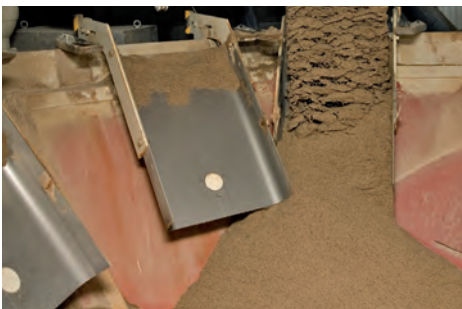
# Application examples



Sensor installed in material chute under silo outlet



In the paper and cardboard industry



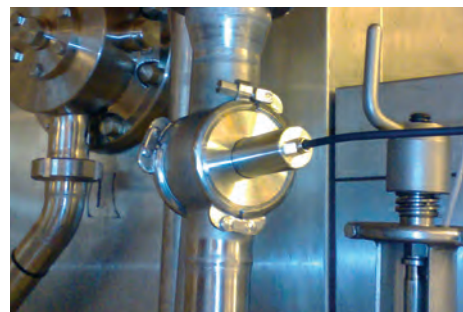
For sand and other aggregates



With DN 80 flange for diesel, oil and other emulsions



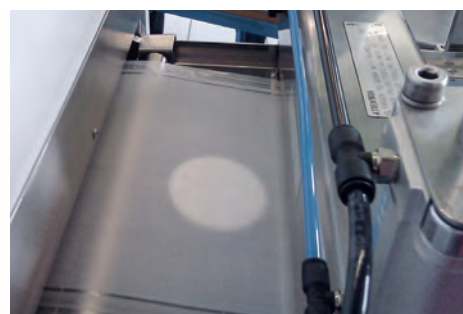
In sliding shoe for cullet (recycling glass)



Food compliant execution e.g. for margarine



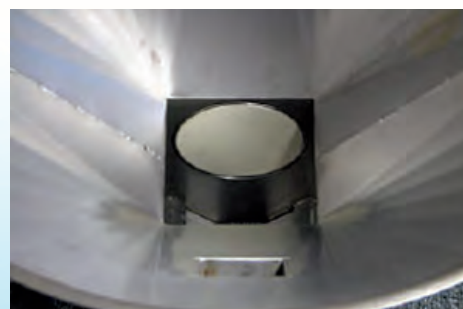
Sensor P30 for small and space limited plants, e.g. for powder and fine aggregates



Fleece-, film- and felt webs



For wooden chips, sawdust, etc.



View in a bulk funnel with installed sensor

## Materials

- Sand, quartz sand
- Recycling glass, soda
- Incineration and flue ash
- Ore, minerals
- Dust, slag
- Different aggregates
- Foundry sand
- Raw materials, filter cake
- Ceramic powder
- Coal, coke, charcoal
- Gypsum, talc
- Lime, loam, clay
- Mineral-, aluminium granules
- Fertilizer
- Diesel, biodiesel
- Oil, crude oil, hardening oil
- Wax, resin
- Margarine
- Carton and paper webs
- Fleece, plastic film, felt webs
- Plastic granules
- Shredded plastic
- Different pellets
- Colour pigments
- Washing powder, detergent
- Wood fibre,-slab,-chips
- Sawdust
- Cat litter
- Pet litter
- Silage
- Biomass
- Silica
- Coolant, lubricant
- Sludge
- Methyl, ethanol, acetone
- Grease
- Pet food (dry + liquid)
- Coarse grain, cereals, mash
- Food and luxury food
- Fruits, marc
- Seed, sugar beet pulp
- Corn, maize, malt
- Rice
- Sugar, salt
- Marzipan
- Coffee, cocoa
- Gelatine, -capsules
- Tobacco
- Lactose, cellulose
- ...
- Paint and colour
- Solvents
- Ceramic slurry
- ...

## Installation places

Silo outlets, material chutes, baffle plates, conveyor belts, transfer points, dryers, screw conveyor, pipes, tanks, ...

## Options and accessories

Stainless steel housing for electronic module



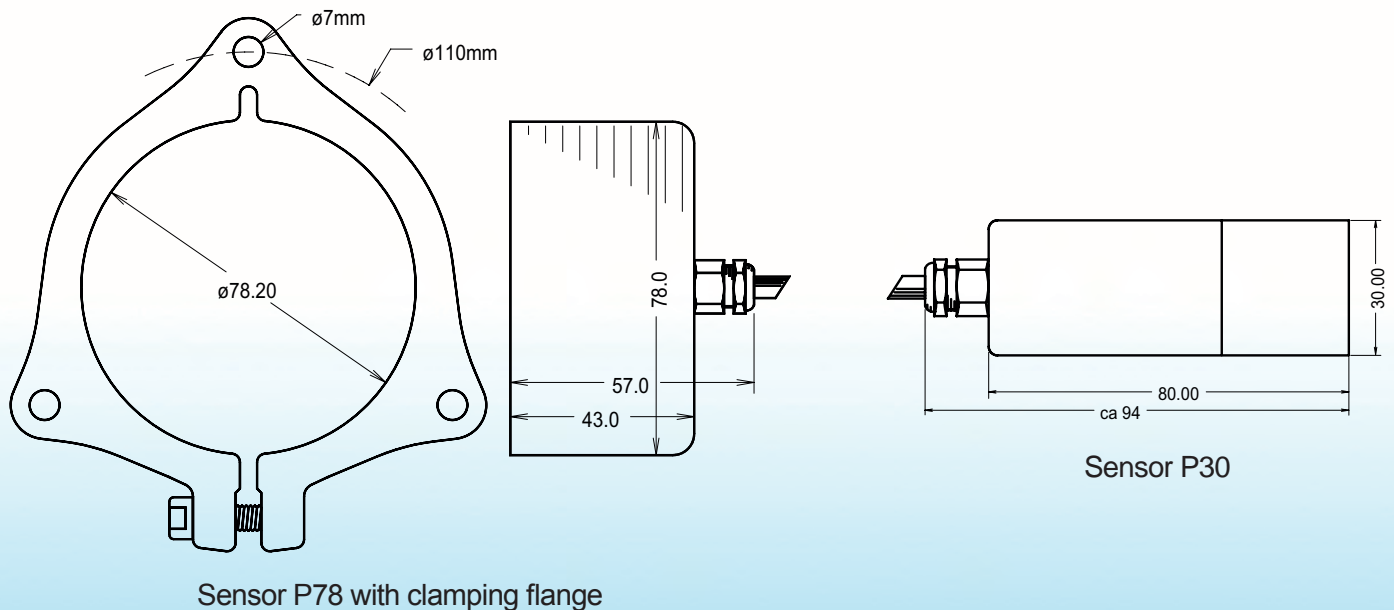
Sensor with dust Ex-protection, zone 22



Funnel for fast moisture measurements in laboratories



# Technical data



## Sensor / Electronic module

Measuring range	0% - 100% F
Physical principle	Capacity determination with high-frequency leakage field
Field Frequency	20 MHz
Capacity resolution	10 <sup>-15</sup> F
Cycle of up-date	32,64 ms
Sampling rate	16 × 10 <sup>6</sup> - 25 × 10 <sup>6</sup>
Measuring precision max.	± 0,05% F <sup>1.)</sup>
Measured value transmission digital	RS-485, multiprocessor protocol
Max. numbers of sensors	16 at bus
Max. cable length	1,2 km
Working-ambient temperature sensor	0°C - 80°C (optional: 100°C)
Working temperature electronic	-20°C - 80°C
Protection class	IP68
Wearing protection	ZrO <sub>2</sub> Al <sub>2</sub> O <sub>3</sub> / PEEK
Material shell / flange	V4A (1.4404)

<sup>1.)</sup> Representative according to the batch or the period of continuous operation with the corresponding evaluator Litronic-FMS, depending on ideal material, flowability and calibration according to the rules.

For emulsions and powder & bulks in Ex areas up to zone 0 or 20 there are special WMS water content measurement sensors available.

Further measurement products like our coating control measurement system you will find on [www.liebherr.com](http://www.liebherr.com) category components/measuring technology.

## Liebherr-Mischtechnik GmbH

Postfach 145, 88423 Bad Schussenried / Germany

Tel. +49 (0)7583 / 949-414, Fax +49 (0)7583 / 949-399

[www.water-content-measurement.com](http://www.water-content-measurement.com) , E-Mail: [info.lmt@liebherr.com](mailto:info.lmt@liebherr.com)



Ident-Nr. 8203 054 05-03/2015\_EN  
Subject to technical modification